

SHAWG

Sheep health

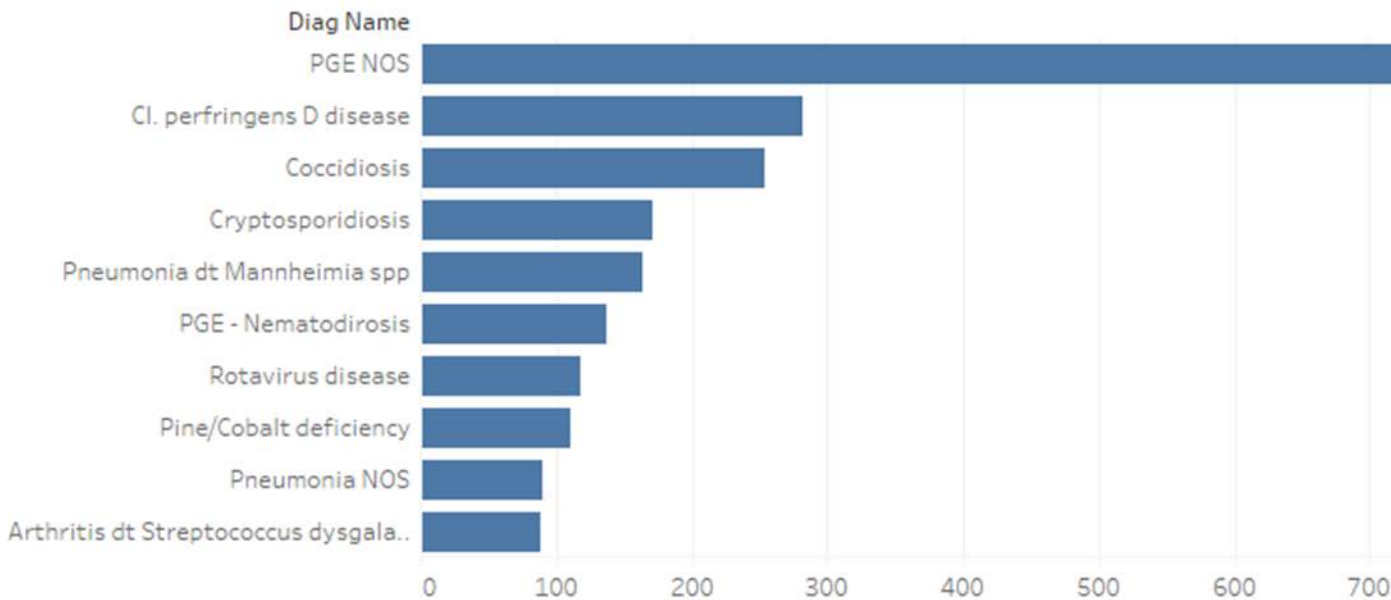
What needs to be done in terms of
medicine use to reduce ewe and lamb
mortality?



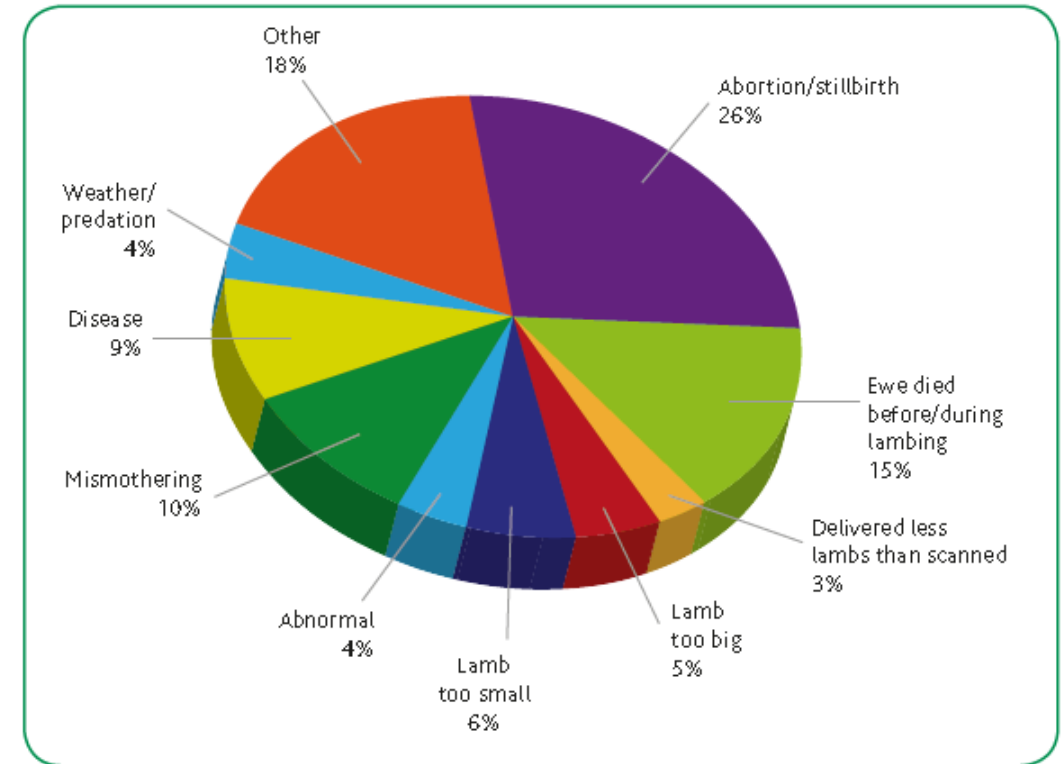
Lamb mortality

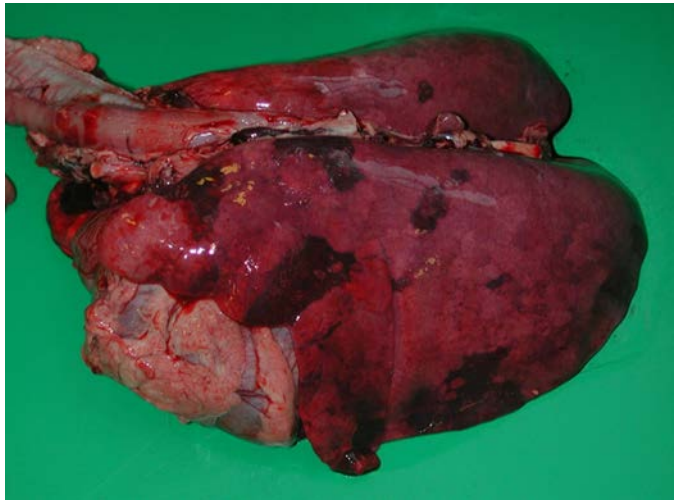


- Lamb losses from scanning to sale or retention of 15 – 20% [SHAWG report for GB 2016/17]



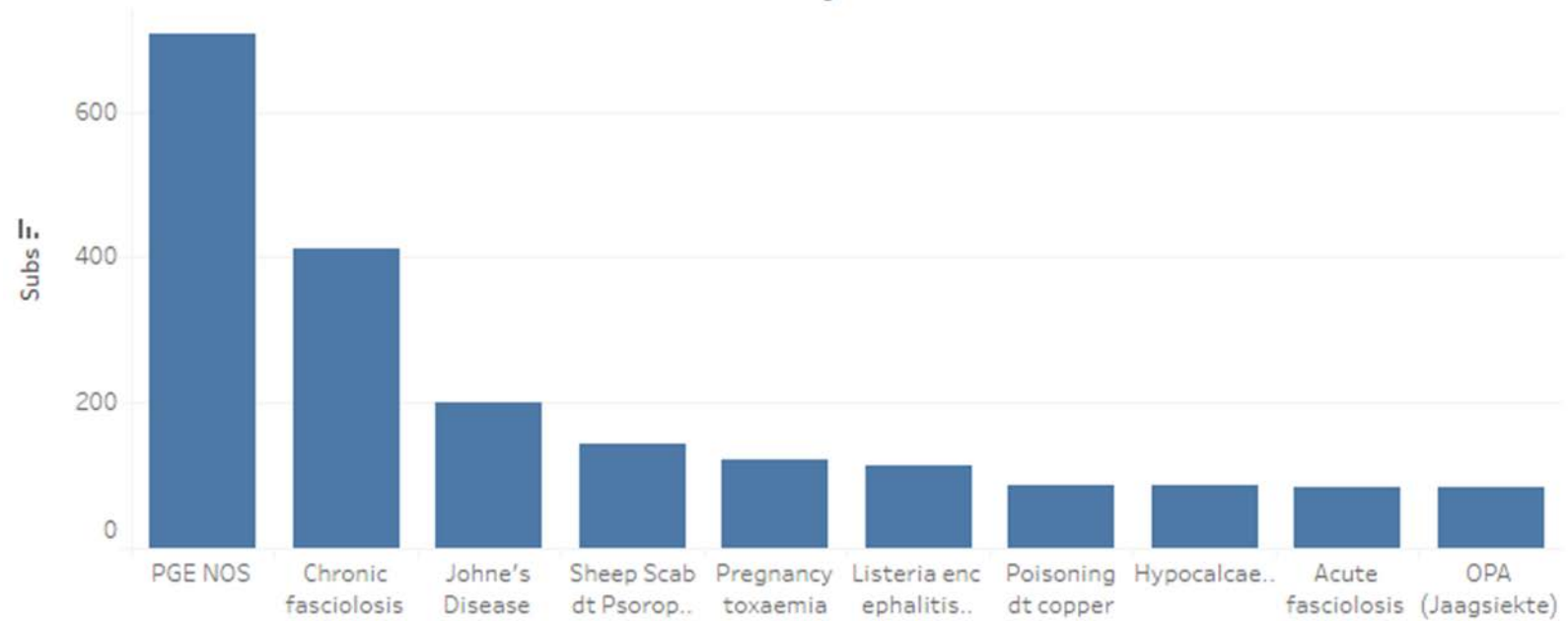
Top 10 most commonly diagnosed disease in pre-weaned and post-weaned lambs up to 12 months of age 2012 – 2015 [VIDA data, APHA]





Ewe mortality

- 0.8 – 1.3 million ewes per year in UK (5 – 8%)
[SHAWG report for GB 2016/17]

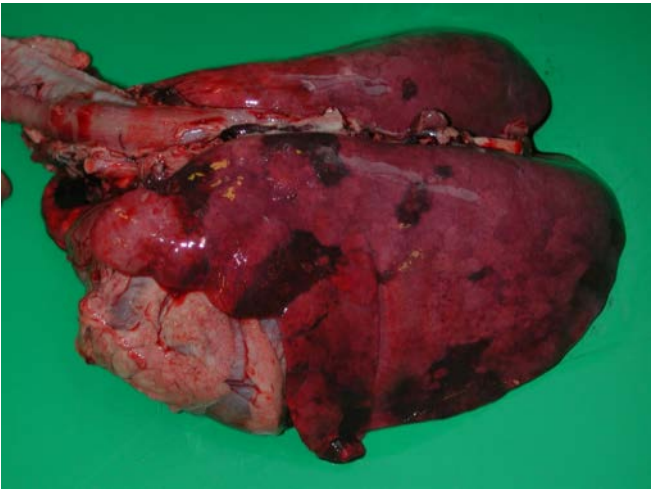


Top 10 most commonly diagnosed disease in sheep (all sample types), 2012 – 2015
[VIDA data]



Ewe mortality

- 0.8 – 1.3 million ewes per year in UK (5 – 8%)
[SHAWG report for GB 2016/17]



10 most commonly diagnosed disease in sheep (all sample types), 2012 – 2015 [VIDA data]

Proactive versus reactive



Flock type		Top third	Average	Bottom third
Non-SDA breeding flock	Vet and med spend (£ per ewe)	6.37	6.61	7.12
	Ewe mortality (%)	3.4	3.5	3.7
	Lamb losses birth to rearing (% of born live)	6	7	10
	Empty ewes (%)	7.2	5.8	4.7
	Flock replacement rate (%)	24.3	22.7	20.1